



# NATOMAS CENTRAL MUTUAL WATER COMPANY

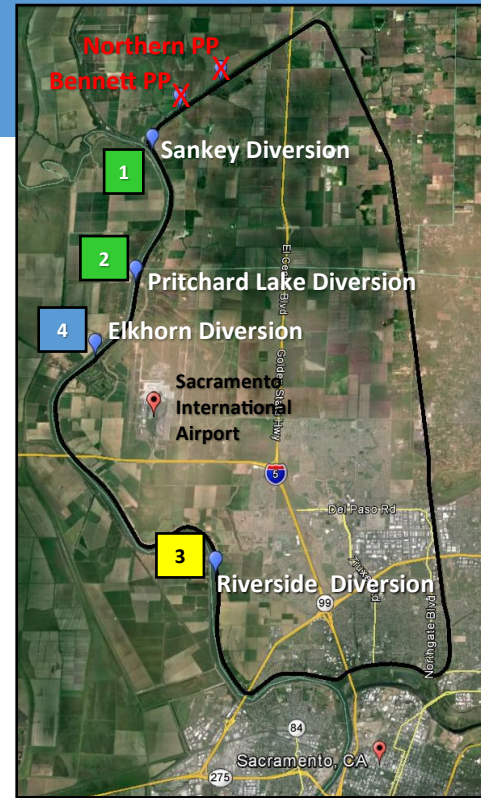
MARCH 2023

## AMERICAN BASIN FISH SCREEN AND HABITAT IMPROVEMENT PROJECT

The Natomas Central Mutual Water Company (Natomas) is a not-for-profit, mutual water company that controls surface water rights for over 280 landowners in an area known as the American Basin. Natomas diverts water from the Sacramento River to provide irrigation water for agricultural use and habitat preservation over a service area of about 24,000 acres located immediately north of the City of Sacramento, California. The operation of Natomas' irrigation facilities provides important habitat for at-risk species, such as the giant garter snake and the Swainson's hawk. Seasonal flooding of rice fields for rice straw decomposition provides needed wetland habitat in the Pacific Flyway for waterfowl.

### PROJECT SUMMARY (SEE PROJECT TIMELINE ON REVERSE)

Natomas has voluntarily engaged in the Anadromous Fish Restoration Program since 1993 to consolidate and screen its five (5) river diversions. The Project is well underway with the two largest diversions completely reconstructed and equipped with state-of-the-art fish screens. Only two of Natomas' high priority diversions on the Sacramento River remain to be screened. These two diversions will be constructed in coordination with the US Army Corps of Engineers' Natomas Basin Flood Control Project that will upgrade the levee discharge pipe crossings to current design standards.



NEW SANKEY DIVERSION

### Phase 1 - Sankey Diversion (434 cfs) 1 Completed 2013

In the first implementation phase, a new diversion on the Sacramento River with flat plate fish screens has been constructed to replace two existing diversions in the Natomas Cross Canal.



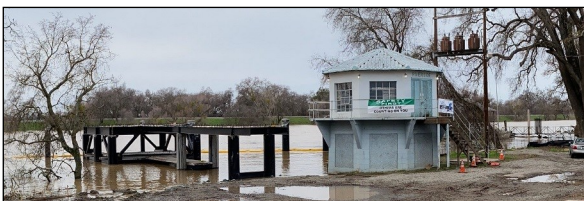
NEW PRITCHARD LAKE DIVERSION

### Phase 2 - Pritchard Lake Diversion (160 cfs) 2 Completed 2015

In the second phase, Natomas' second largest diversion was removed and replaced with a new structure equipped with retractable drum screens.

### Phase 3 - Riverside Diversion (45 cfs) 3 Completion in 2023

The third phase will build a new pumping plant with a retractable drum screen. Construction began in 2022 and will be completed spring of 2023.



RIVERSIDE DIVERSION UNDER CONSTRUCTION

### Phase 4 - Elkhorn Diversion (60 cfs) 4 Target 2024/2025

The final phase will reconstruct the pumping plant with retractable drum screens similar to the Riverside Diversion.



EXISTING ELKHORN DIVERSION



# NATOMAS CENTRAL MUTUAL WATER COMPANY

## AMERICAN BASIN FISH SCREEN AND HABITAT IMPROVEMENT PROJECT

### Project Accomplishments

- 1993** • Began Project Planning
- 1998** • Began Feasibility Study
- 2002** • Completed Feasibility Study and Preliminary Design
- 2010** • Completed Environmental Compliance and Final Design of the Sankey Diversion (Phase 1)
- 2013** • Completed Construction of the Sankey Diversion (434 cfs)
- 2014** • Decommissioned the Unscreened Northern & Bennett Diversions and the Low-Flow Dam at the Confluence of the Natomas Cross Canal with the Sacramento River
- 2014** • Began Construction of the Pritchard Lake Pumping Plant (160 cfs) (Phase 2)
- 2015** • Completed Construction of the Pritchard Lake Pumping Plant
- 2016** • Evaluated the Configuration of Riverside Diversion (Phase 3) and Elkhorn Diversion (Phase 4)
- 2020 - 2022** • Completed Design & Permitting for the Riverside Diversion (Phase 3)
- 2022 - 2023** • Construction of the Riverside Diversion (45 cfs) - completion in May 2023

### Schedule to Complete Final Phase

- 2023 - 2024** • Complete Design & Permitting for the Elkhorn Diversion (Phase 4)
- 2024 - 2025** • Construct Elkhorn Diversion (80 cfs)



EXISTING ELKHORN DIVERSION

Funding Source	FUNDING PROVIDED: PHASE 1 THRU 3 (\$M)						FUNDING REQUIRED - PHASE 4(\$M)			Totals (\$M)
	FY99 to FY05	FY06 to FY10	FY11 to FY16	FY15 to FY20	FY 21 to FY23	Subtotal	FY23	FY24	Subtotal	
Federal	3.2	18.0	3.3	-	1.7	26.2	-	3.4	3.4	29.6
State	15.2	9.0	1.8	-	-	26.0	-	-	-	26.0
Local	-	-	2.7	-	8.9	11.6	1.3 <sup>1</sup>	14.3 <sup>1</sup>	15.6	27.2
<b>Totals</b>	<b>18.4</b>	<b>27.0</b>	<b>7.8</b>	<b>-</b>	<b>10.6</b>	<b>63.8</b>	<b>1.3</b>	<b>17.7</b>	<b>19.0</b>	<b>82.8</b>

<sup>1</sup> Local flood control funds will be leveraged to construct project features that are common with the Natomas Basin Flood Control Project. Availability requires aligning with the US Army Corps of Engineers' project priorities.

### CONTACT INFORMATION

**Brett Gray, General Manager**  
 Natomas Mutual Water Company  
 2601 West Elkhorn Blvd  
 Rio Linda, CA 95673  
 (916) 419-5936  
 BGray@natomaswater.com

**Scott Brown, Program Manager**  
 Larsen Wurzel & Associates  
 2450 Venture Oaks Way, Suite 240  
 Sacramento, CA 95833  
 (916) 827-1707  
 scott@larsenwurzel.com